



THE EMERGENCY ASSISTANCE CENTER, INC

CONTENTS

EIN: 34-1899752
Report Generated on: 10/06/2021

Executive Summary	2
Programs & Results	4
Financial Review	7
Operations & Leadership	9

APPENDIX

Key Documents	19
Charity Check Report	20

THE EMERGENCY ASSISTANCE CENTER, INC

📍 Northfield, OH
🌐 www.teacenter.org
📞 (330)467-7945

🔗 [View GuideStar Profile](#)



MISSION

Our mission at The Emergency Assistance Center is to provide food, clothing, personal hygiene items, and seasonal support for our Northern Summit County neighbors in need.

EIN

34-1899752

RULING YEAR

2000

IRS SUBSECTION

501(c)(3) Public Charity

FOUNDING YEAR

1992

MAIN ADDRESS

9199 Olde Eight Road, Ste C
Northfield, OH
44067

AFFILIATION TYPE

Independent Organization

CONTACT

Joyce Hunt
(330) 467-7945
joyce@teacenter.org

PRINCIPAL OFFICER

Joyce Hunt

BOARD CHAIR

Randall Hyde

SUBJECT AREA

Basic and emergency aid

NTEE Code

Emergency Assistance (Food, Clothing, Cash) (P60)

PROGRAMS

1. The Emergency Assistance Center

Population(s) served: Adults, Children and youth (0-19 years)

COMPLIANCE

- ✓ IRS Pub 78 Verified as of September 2021
- ✓ IRS BMF 509(a) (1) as of September 13, 2021
- ✗ A-133 Audit Required/Performed?
- ✓ Conflict of Interest Policy
- ✗ Written whistleblower policy

Section 509(a)(1) organization as referred to in Section 170(b)(1)(A)(vi)

TRANSPARENCY MEASURES

- ✓ Board Practices Reported?
- ✓ Diversity Data Reported?
- 7 Number of Independent Board Members

Programs & Results

PROGRAMS

Source: Self-Reported by Organization,
October 2021

The Emergency Assistance Center

Population(s) Served:

Adults

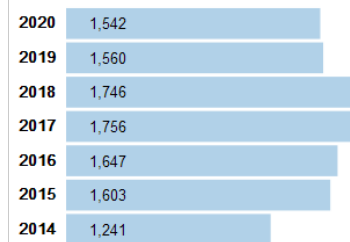
Children and youth (0-19 years)

We are a food pantry that serves Northern Summit County, Ohio. We assist with food, personal hygiene items and clothing on a monthly basis. We also provide additional food for holiday meals for Thanksgiving, Christmas and Easter.

RESULTS

Number of clients served

TOTALS BY YEAR



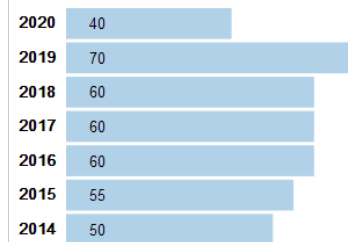
Population(s) Served: Economically disadvantaged, low-income, and poor people

Related program: The Emergency Assistance Center

Notes: The Emergency Assistance Center provides food, clothing, personal hygiene items, and seasonal support to low-income families in our service area.

Number of volunteers

TOTALS BY YEAR



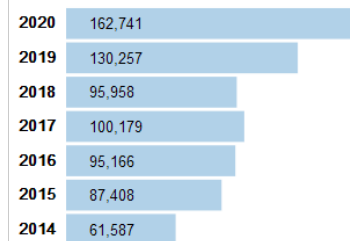
Population(s) Served: Economically disadvantaged, low-income, and poor people

Related program: The Emergency Assistance Center

Notes: The Emergency Assistance Center currently has 40 dedicated volunteers that serve weekly. This does not include the number of student volunteers or drop-in volunteers. COVID-19 caused a reduction.

Number of emergency meals provided

TOTALS BY YEAR



Population(s) Served: Economically disadvantaged, low-income, and poor people

Related program: The Emergency Assistance Center

Notes: The Emergency Assistance Center provides emergency food assistance to low-income families in our service area.

CHARTING IMPACT

What is the organization aiming to accomplish?

The goal of The Emergency Assistance Center is to provide emergency food assistance to all low-income families in our service area who need help.

What are the organization's key strategies for making this happen?

We are 100% community-funded through monetary donations, as well as food and hygiene donations by local individuals, business, schools, churches, and organizations. We work hard to maintain strong relationships with those who support us.

We accept the help of anyone who wants to volunteer to help maintain operations at the Center and work with clients.

What are the organization's capabilities for doing this?

The Emergency Assistance Center sustains relationships with our donors and the community through personal contact, our Facebook page @teacenter, and our website www.teacenter.org.

We currently have 40 regular volunteers who give their time every week to support the operations of the Center. Most of our volunteers are retirees and many were not able to come in during the COVID-19 pandemic. We are gradually increasing number of volunteers to pre-COVID levels.

What have and haven't they accomplished so far?

Goal 1: By increasing funding, we will be better able to serve our current clients and will continue to look at expanding our services and areas. We have recently partnered with Ohio Department of Job & Family Services and with Veterans Affairs so that anyone in the area can meet with representatives at our location.

Goal 2: By having a well defined policy, our stakeholders have a clear message on why and how we are obtaining our long term goals.

Goal 3: We believe that The Emergency Assistance Center will continue to grow, not only by volunteers and donors but by clients. We believe that it will continually positive identity within the communities in which we serve.

Goal 4: Our Fundraising committee continues to work on goals of fundraising and event in which this will occur. They report to our Board of Directors.

Goal 5: We believe that our Social Media presence will continue and will look at ways to expand and use other forms of social media to talk about not only the Emergency Assistance Center but to talk about food insecurity in our community.

Goal 6: We are looking to retain and to continually train our board members.

Financials

FISCAL YEAR START: 01/01

FISCAL YEAR END: 12/31

FINANCIALS QUICK VIEW

Surpluses in last 5 years 4

Negative Net Assets in past 5 years 0

Financial Trends Analysis

Business Model Indicators

Created in Partnership with



Profitability	2015	2016	2017	2018	2019
Unrestricted surplus (deficit) before depreciation	\$19,729	-\$7,934	\$485	\$4,826	\$27,983
As a % of expenses	3.1%	-0.9%	0.1%	0.7%	4.0%
Unrestricted surplus (deficit) after depreciation	\$18,760	-\$9,106	-\$406	\$4,183	\$27,588
As a % of expenses	2.9%	-1.0%	-0.1%	0.6%	3.9%

Revenue Composition					
Total revenue (unrestricted & restricted)	\$665,092	\$880,739	\$638,076	\$707,594	\$736,071
Total revenue, % change over prior year	11.8%	32.4%	-27.6%	10.9%	4.0%
Program services revenue	2.1%	3.6%	1.4%	0.0%	0.0%
Membership dues	0.0%	0.0%	0.0%	0.0%	0.0%
Investment income	0.0%	0.0%	0.1%	0.1%	0.1%
Government grants	0.0%	0.0%	0.0%	0.0%	0.0%
All other grants and contributions	97.8%	96.4%	98.5%	99.9%	99.9%
Other revenue	0.0%	0.0%	0.0%	0.0%	0.0%

Expense Composition					
Total expenses before depreciation	\$645,363	\$888,757	\$637,594	\$702,768	\$708,088
Total expenses, % change over prior year	18.8%	37.7%	-28.3%	10.2%	0.8%
Personnel	12.0%	8.6%	12.3%	11.6%	11.3%
Professional Fees	0.7%	0.4%	0.5%	0.4%	0.2%
Occupancy	4.5%	2.0%	2.6%	2.7%	3.3%
Interest	0.2%	0.0%	0.2%	0.0%	0.0%
Pass-Through	0.0%	0.0%	0.0%	0.0%	0.0%
All other expenses	82.6%	89.0%	84.4%	85.2%	85.1%

Financial Trends Analysis, continued

Moving Toward Full Cost Coverage

Full Cost Components (estimated)	2015	2016	2017	2018	2019
Total Expenses (after depreciation)	\$646,332	\$889,929	\$638,485	\$703,411	\$708,483
One Month of Savings	\$53,780	\$74,063	\$53,133	\$58,564	\$59,007
Debt Principal Repayment	\$0	\$0	\$0	\$0	\$0
Fixed Asset Additions	\$2,051	\$0	\$0	\$0	\$0
Total Full Costs (estimated)	\$702,163	\$963,992	\$691,618	\$761,975	\$767,490

Capital Structure Indicators

Liquidity

Months of cash	2.9	2.0	2.7	2.5	3.0
Months of cash and investments	2.9	2.0	2.7	2.5	3.0
Months of estimated liquid unrestricted net assets	2.8	1.9	2.7	2.5	3.0

Balance Sheet Composition

Cash	\$153,987	\$145,090	\$145,177	\$149,199	\$177,048
Investments	\$0	\$0	\$0	\$0	\$0
Receivables	\$0	\$0	\$0	\$0	\$0
Gross land, buildings, and equipment (LBE)	\$12,594	\$13,398	\$13,398	\$14,157	\$8,267
Accumulated depreciation (% of LBE)	67.9%	71.3%	76.6%	80.5%	71.5%
Liabilities (as % of assets)	2.4%	2.4%	2.1%	1.5%	1.2%
Unrestricted net assets	\$0	\$0	\$0	\$150,821	\$178,408
Temporarily restricted net assets	\$0	\$0	\$0	\$0	N/A
Permanently restricted net assets	\$0	\$0	\$0	\$0	N/A
Total restricted net assets	\$0	\$0	\$0	\$0	\$0
Total net assets	\$156,150	\$147,044	\$146,638	\$150,821	\$178,408

Key Data Checks

Material Data Errors	2015	2016	2017	2018	2019
	No	No	No	No	No

Note: This issue is relevant to a small number of organizations: The nonprofit subject(s) of this report may have affiliates. The Form 990 data may not include information about any or all potential affiliates. If an organization does have affiliates and these affiliates have substantial financial activity, the financial data in this report may not present a comprehensive picture of the nonprofit's financial condition. Please consult the 990s of any potentially related affiliates for additional information.

[Formulas for key metrics](#)

['Key Revenue & Expense Data from Form 990'](#)

['Key Balance Sheet Data from Form 990'](#)

Operations

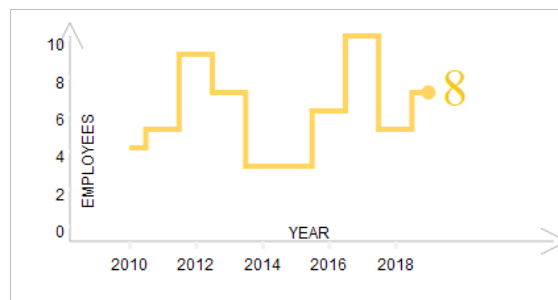
Source: Self-Reported by Organization, October 2021

PRINCIPAL OFFICER

Joyce Hunt

NUMBER OF EMPLOYEES

Source: IRS Form 990



BOARD CHAIR

Randall Hyde

OFFICERS, DIRECTORS, TRUSTEES, AND KEY EMPLOYEES

FISCAL YEAR 2019

Name	Title	Compensation	Other	Related
JOYCE HUNT	EXECUTIVE DI	\$40,415	\$0	\$0
PAUL FIKE	TRUSTEE	\$0	\$0	\$0
RANDALL HYDE	TRUSTEE - CH	\$0	\$0	\$0
JOHN JONES	TRUSTEE - TR	\$0	\$0	\$0
JANET MEYER	TRUSTEE - SE	\$0	\$0	\$0
SANDRA MCCANNON-LARRY	TRUSTEE	\$0	\$0	\$0
VALERIE PADD	TRUSTEE	\$0	\$0	\$0
MICHAEL WOLFE	TRUSTEE	\$0	\$0	\$0

OFFICERS, DIRECTORS, TRUSTEES, AND KEY EMPLOYEES

FISCAL YEAR 2018

Name	Title	Compensation	Other	Related
JOYCE HUNT	EXECUTIVE DI	\$39,165	\$0	\$0
RANDALL HYDE	TRUSTEE - CH	\$0	\$0	\$0
JOHN JONES	TRUSTEE - TR	\$0	\$0	\$0
JANET MEYER	TRUSTEE - SE	\$0	\$0	\$0
SANDRA MCCANNON-LARRY	TRUSTEE	\$0	\$0	\$0
PAUL FIKE	TRUSTEE	\$0	\$0	\$0
VALERIE PADD	TRUSTEE	\$0	\$0	\$0
MICHAEL WOLFE	TRUSTEE	\$0	\$0	\$0

OFFICERS, DIRECTORS, TRUSTEES, AND KEY EMPLOYEES

FISCAL YEAR 2017

Name	Title	Compensation	Other	Related
JOYCE HUNT	EXECUTIVE DI	\$37,865	\$0	\$0
RANDALL HYDE	TRUSTEE - CH	\$0	\$0	\$0
JOHN JONES	TRUSTEE - TR	\$0	\$0	\$0
MICHAEL WOLFE	TRUSTEE - SE	\$0	\$0	\$0
SANDRA MCCANNON-LARRY	TRUSTEE	\$0	\$0	\$0
PAUL FIKE	TRUSTEE	\$0	\$0	\$0
JANET MEYER	TRUSTEE	\$0	\$0	\$0
VALERIE PADD	TRUSTEE	\$0	\$0	\$0

OFFICERS, DIRECTORS, TRUSTEES, AND KEY EMPLOYEES

FISCAL YEAR 2016

Name	Title	Compensation	Other	Related
JOYCE HUNT	EXECUTIVE DI	\$36,465	\$0	\$0
RANDALL HYDE	TRUSTEE - CH	\$0	\$0	\$0
JOHN JONES	TRUSTEE - TR	\$0	\$0	\$0
MICHAEL WOLFE	TRUSTEE - SE	\$0	\$0	\$0
SANDRA MCCANNON-LARRY	TRUSTEE	\$0	\$0	\$0
PAUL FIKE	TRUSTEE	\$0	\$0	\$0
JANET MEYER	TRUSTEE	\$0	\$0	\$0

OFFICERS, DIRECTORS, TRUSTEES, AND KEY EMPLOYEES

FISCAL YEAR 2015

Name	Title	Compensation	Other	Related
JOYCE HUNT	EXECUTIVE DI	\$36,369	\$0	\$0
RANDALL HYDE	TRUSTEE - CH	\$0	\$0	\$0
JOHN JONES	TRUSTEE - TR	\$0	\$0	\$0
MICHAEL WOLFE	TRUSTEE	\$0	\$0	\$0
SANDRA MCCANNON-LARRY	TRUSTEE	\$0	\$0	\$0
PAUL FIKE	TRUSTEE	\$0	\$0	\$0

Paid Preparers

FISCAL YEAR 2019

Firm Name	Firm EIN	Firm Address	Firm Phone
KATHLEEN J MILLER & ASSOCIATES INC	34-1366176	7351 CENTER ST, MENTOR OH 440605801 USA	440-255-1541

Paid Preparers

FISCAL YEAR 2018

Firm Name	Firm EIN	Firm Address	Firm Phone
KATHLEEN J MILLER & ASSOCIATES INC	34-1366176	7351 CENTER ST, MENTOR OH 440605801 USA	440-255-1541

Paid Preparers

FISCAL YEAR 2017

Firm Name	Firm EIN	Firm Address	Firm Phone
KATHLEEN J MILLER & ASSOCIATES INC	34-1366176	7351 CENTER ST, MENTOR OH 440605801 USA	440-255-1541

BOARD LEADERSHIP PRACTICES

GuideStar worked with BoardSource, the national leader in nonprofit board leadership and governance, to create this section, which enables organizations and donors to transparently share information about essential board leadership practices.

BOARD ORIENTATION & EDUCATION

Does the board conduct a formal orientation for new board members and require all board members to sign a written agreement regarding their roles, responsibilities, and expectations?	Yes
--	-----

CEO OVERSIGHT

Has the board conducted a formal, written assessment of the chief executive within the past year?	Yes
---	-----

ETHICS & TRANSPARENCY

Have the board and senior staff reviewed the conflict-of-interest policy and completed and signed disclosure statements in the past year?	Yes
---	-----

BOARD COMPOSITION

Does the board ensure an inclusive board member recruitment process that results in diversity of thought and leadership?	Yes
--	-----

BOARD PERFORMANCE

Has the board conducted a formal, written self-assessment of its performance within the past three years?	Yes
---	-----

Organizational Demographics

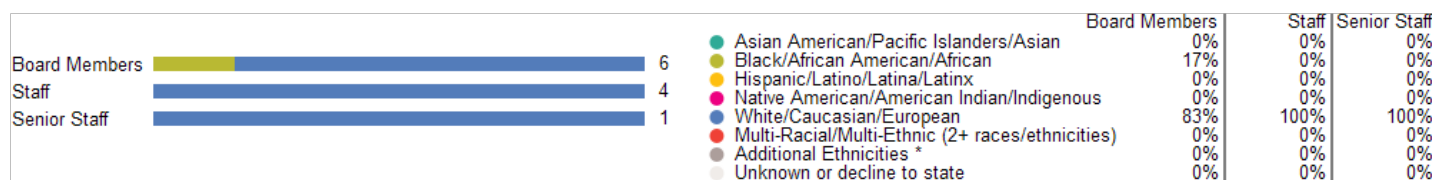
Who works and leads organizations that serve our diverse communities? This organization has voluntarily shared information to answer this important question and to support sector-wide learning. GuideStar partnered on this section with CHANGE Philanthropy and Equity in the Center.

Leadership

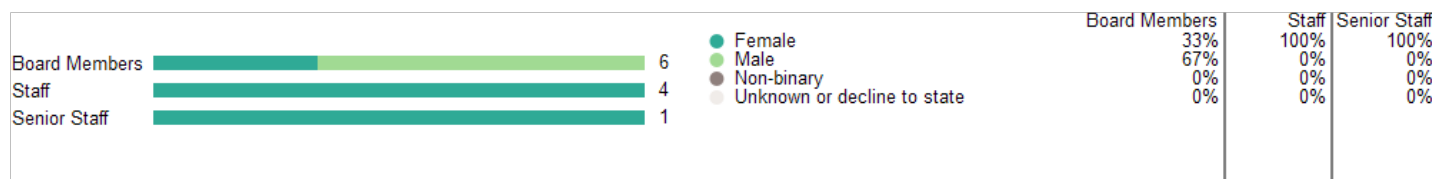
The organization's leader identifies as:

Race & Ethnicity	White/Caucasian/European
Gender Identity	Female, Not transgender (cisgender)
Sexual Orientation	Heterosexual or Straight
Disability Status	Person without a disability

Race & Ethnicity



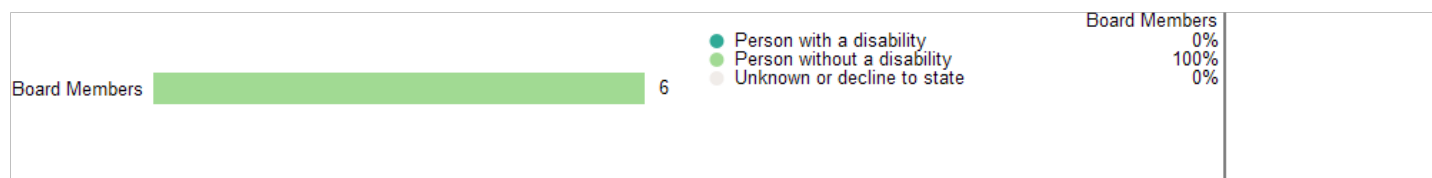
Gender Identity



Sexual Orientation

No data

Disability



We do not display staff or senior staff disability information for organizations with fewer than 15 staff.

Equity Strategies *Last Updated: 10/06/2021*

Candid partnered with Equity in the Center - a project that works to shift mindsets, practices, and systems within the social sector to increase racial equity - to create this section. [Learn More](#)

Data

- ✓ We analyze disaggregated data and root causes of race disparities that impact the organization's programs, portfolios, and the populations served.
- ✓ We disaggregate data to adjust programming goals to keep pace with changing needs of the communities we support.
- ✓ We have long-term strategic plans and measurable goals for creating a culture such that one's race identity has no influence on how they fare within the organization.

Policies and processes

- ✓ We seek individuals from various race backgrounds for board and executive director/CEO positions within our organization.
- ✓ We have community representation at the board level, either on the board itself or through a community advisory board.
- ✓ We help senior leadership understand how to be inclusive leaders with learning approaches that emphasize reflection, iteration, and adaptability.

Appendix

Key Documents

IRS Forms 990

[2019 990](#)

[2018 990](#)

[2018 990](#)

[2017 990](#)

[2016 990](#)

IRS Forms 990T

Not Available

Audited Financial Statements

[2020 Audited Financial Statement](#)

Key Organization Documents

[Letter of Determination](#)

[2021 Annual Report](#)

['Key Revenue & Expense Data from Form 990'](#)

['Key Balance Sheet Data from Form 990'](#)

GuideStar Charity Check

THE EMERGENCY ASSISTANCE CENTER, INC

1919 Olde Eight Road, Ste C
Northfield, OH 44067

- ✓ Foundation Status Code: PC*
- ✓ Public charity described in section 509(a)(1) or (2)

IRS Publication 78 Details



Organization name	Location	Most recent IRS Publication 78
Emergency Assistance Center Inc.	Northfield, OH	September 2021
EIN	<u>Deductibility status description</u>	Verified with most recent Internal Revenue Bulletin
34-1899752	A public charity (50% deductibility limitation).	October 04, 2021

IRS Business Master File Details

IRS BMF 509(a)(1)

Organization name	Most recent IRS BMF	Reason for Non-Private Foundation Status
EMERGENCY ASSISTANCE CENTER INC	September 13 2021	Section 509(a)(1) organization as referred to in Section 170(b)(1)(A)(vi)
EIN	IRS subsection	Ruling date
34-1899752	This organization is a <u>501(c)(3) Public Charity</u>	03/2000
This organization was not included in the Office of Foreign Assets Control Specially Designated Nationals (SDN) list.		

On September 8, 2011, the IRS issued [regulations](#) which eliminated the advance ruling process for a section 501(c)(3) organization. [Learn more](#)

* The Foundation Status Code is the code that foundations are required to provide for each grantee annually on part XV of Form 990PF. Note that this code cannot be derived in some cases (e.g., supporting organizations for which 'type' can't be determined).

[IRS Revenue Procedure 2011-33](#) allows grantors to rely on third-party resources, such as GuideStar Charity Check, to obtain required Business Master File (BMF) data concerning a potential grantee's public charity classification under section 509 (a) (1), (2) or (3).

GuideStar Charity Check Data Sources

-GuideStar acquires all IRS data directly from the Internal Revenue Service.

-[IRS Publication 78 \(Cumulative List of Organizations\)](#) lists organizations that have been recognized by the Internal Revenue Service as eligible to receive tax-deductible contributions.

-The [IRS Internal Revenue Bulletin](#) (IRB) lists changes in charitable status since the last Publication 78 release. Between the release of IRS Publication 78 and the subsequent IRS Internal Revenue Bulletin, the IRB date will reflect the most recent release date of IRS Publication 78.

-The [IRS Business Master File](#) lists approximately 1.7 million nonprofits registered with the IRS as tax-exempt organizations.

-The [IRS Automatic Revocation of Exemption List](#) contains organizations that have had their federal tax-exempt status automatically revoked for failing to file an annual return or notice with the IRS for three consecutive years.

-The Foundation Status Code is a value derived by mapping the codes found on the [990PF filing instructions](#) to the corresponding codes in the IRS BMF. Note that not all codes are able to be mapped due to insufficient data.

-The Office of Foreign Assets Control (OFAC) [Specially Designated Nationals \(SDN\) list](#) organizations that are owned or controlled by targeted individuals, groups, and entities, such as terrorists or narcotics traffickers. Their assets are blocked and U.S. persons are generally prohibited from dealing with them.